

SUPPORTING INFORMATION

A Practical One-Pot Two-Step Protocol for the Microwave-Assisted Synthesis of Highly Functionalized Rhodanine Derivatives

Marco Radi,^a Lorenzo Botta,^a Gianni Casaluce,^a Martina Bernardini^a and Maurizio Botta^{a,b,}*

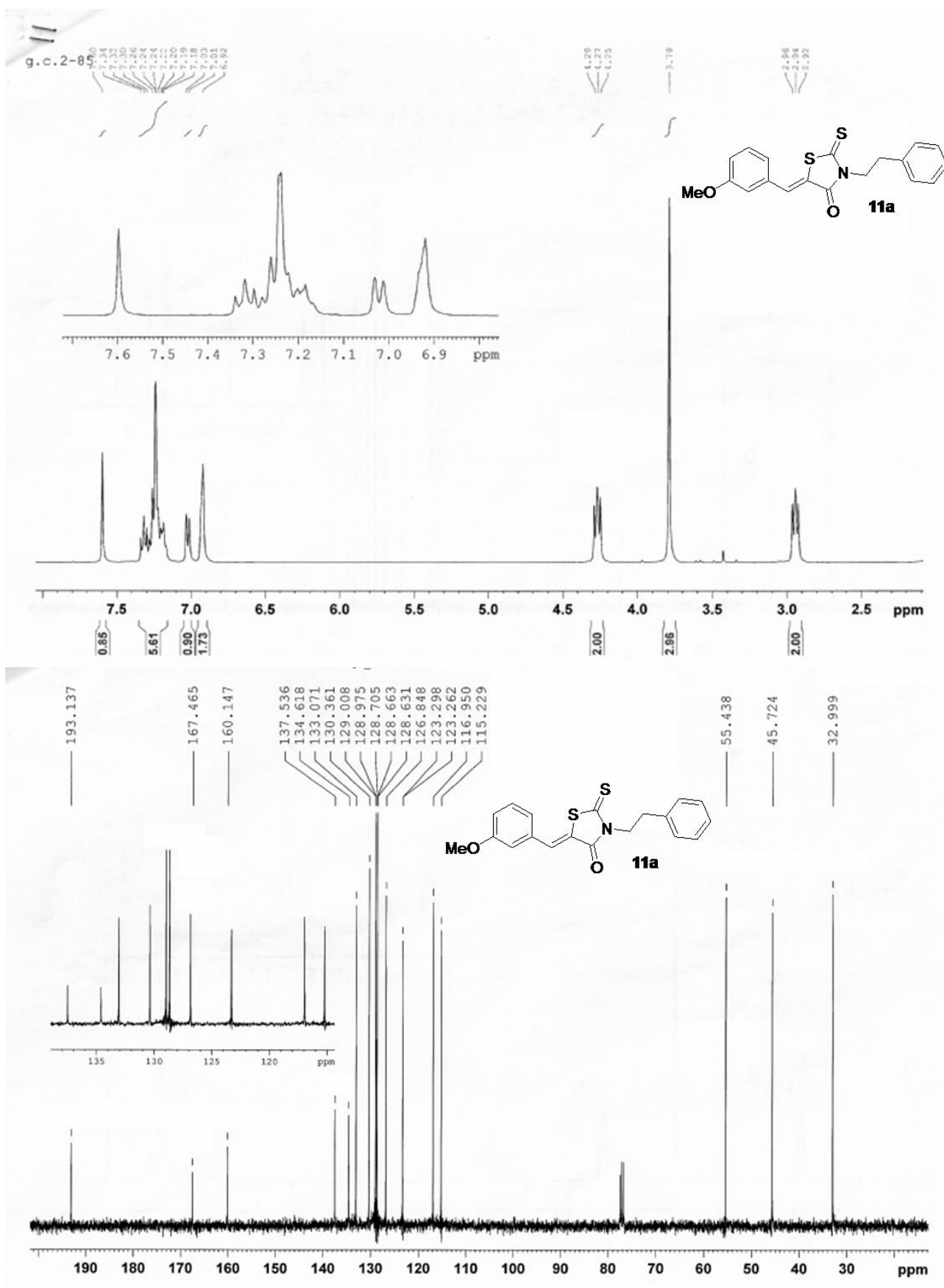
* To whom correspondence should be addressed. E-mail: botta@unisi.it

^aDipartimento Farmaco Chimico Tecnologico, Università degli Studi di Siena, Via Alcide de Gasperi 2, I-53100, Siena, Italy

^bSbarro Institute for Cancer Research and Molecular Medicine, Center for Biotechnology, College of Science and Technology, Temple University, BioLife Science Bldg., Suite 333, 1900 N 12th Street, Philadelphia, PA 19122, USA

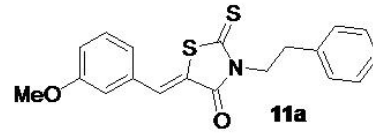
LC/MS, ¹H and ¹³C NMR spectra for the collection of 3-substituted-5-arylidene rhodanines (11a-k).

(Z)-5-(3-methoxybenzylidene)-3-phenethyl-2-thioxothiazolidin-4-one (11a).

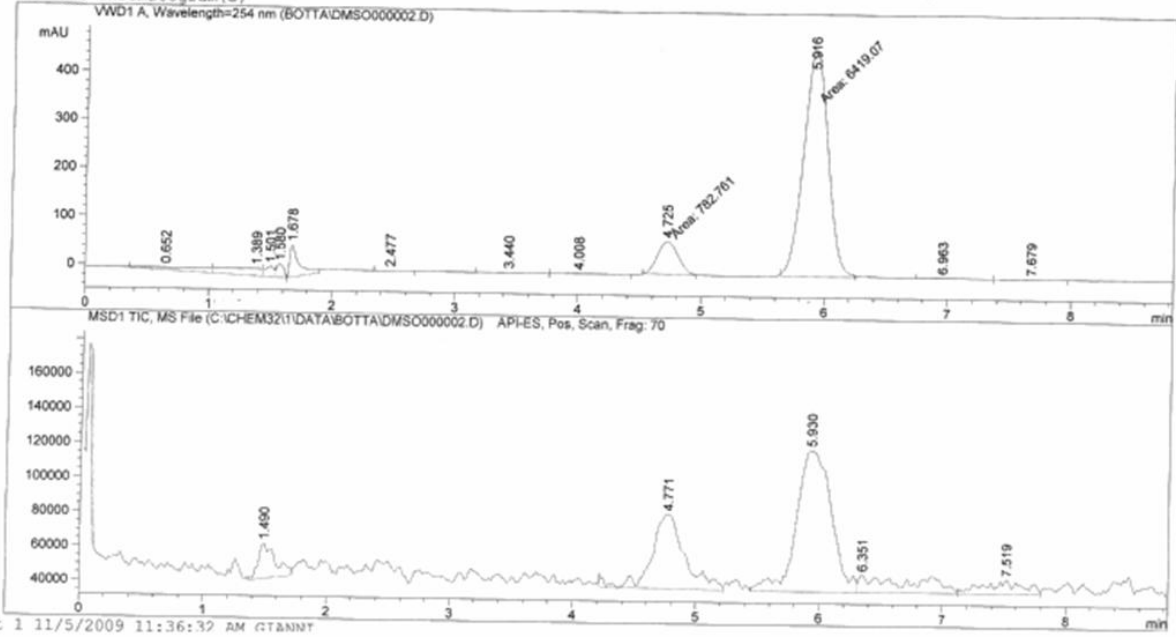


Print of window 38: Current Chromatogram(s)

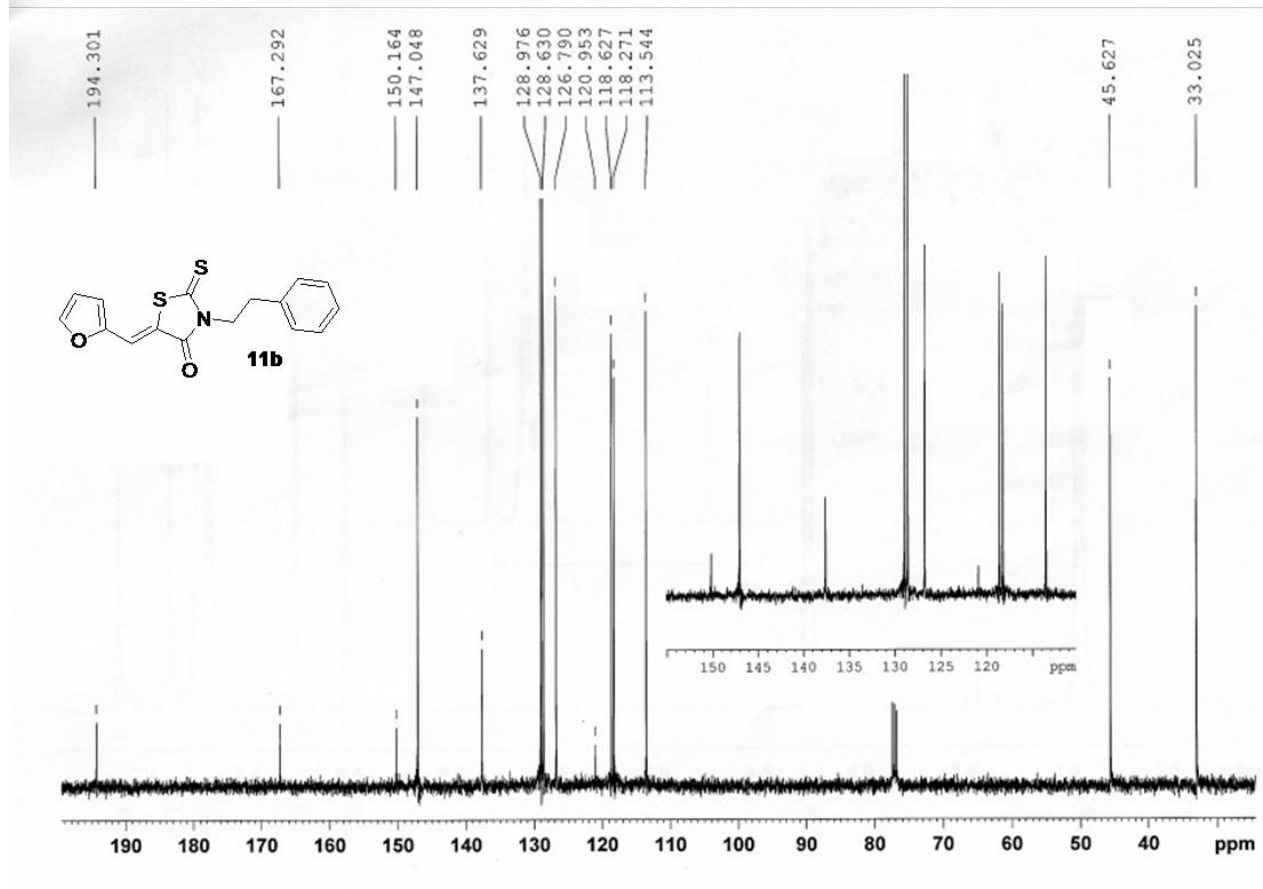
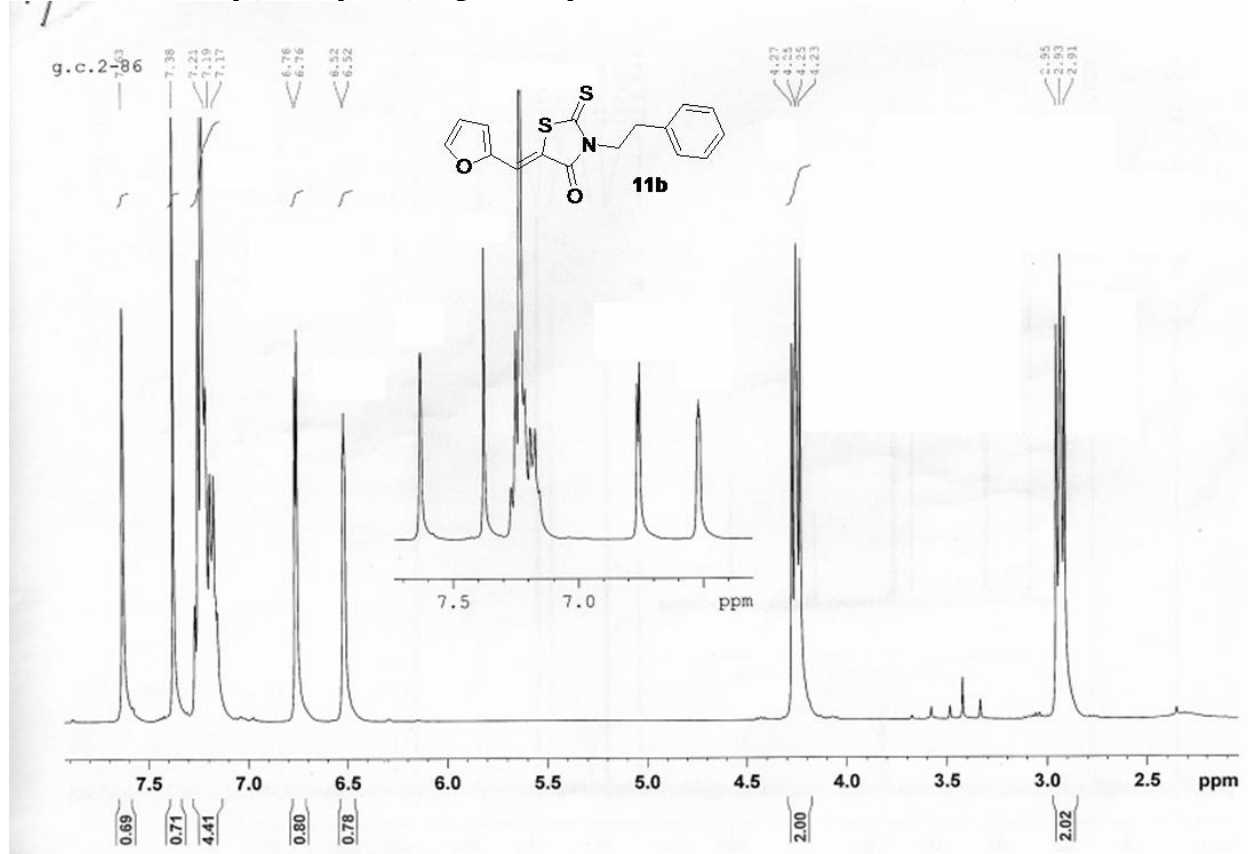
Acq. Operator : GIANNI
 Acq. Instrument : Instrument 1 Location : -
 Injection Date : 11/5/2009 11:22:47 AM Inj : 1
 Method : C:\CHEM32\1\METHODS\ALICE.M
 Last changed : 11/5/2009 11:16:24 AM by GIANNI
 (modified after loading)
 Sample Info :
 COLUMN: ZORBAX C8 4.6X15
 Conditions: MOBIL PHASE = 85/15 MeOH/H2O
 PRESSURE: 135 BAR
 FLOW: 1 mL/min



Current Chromatogram(s)

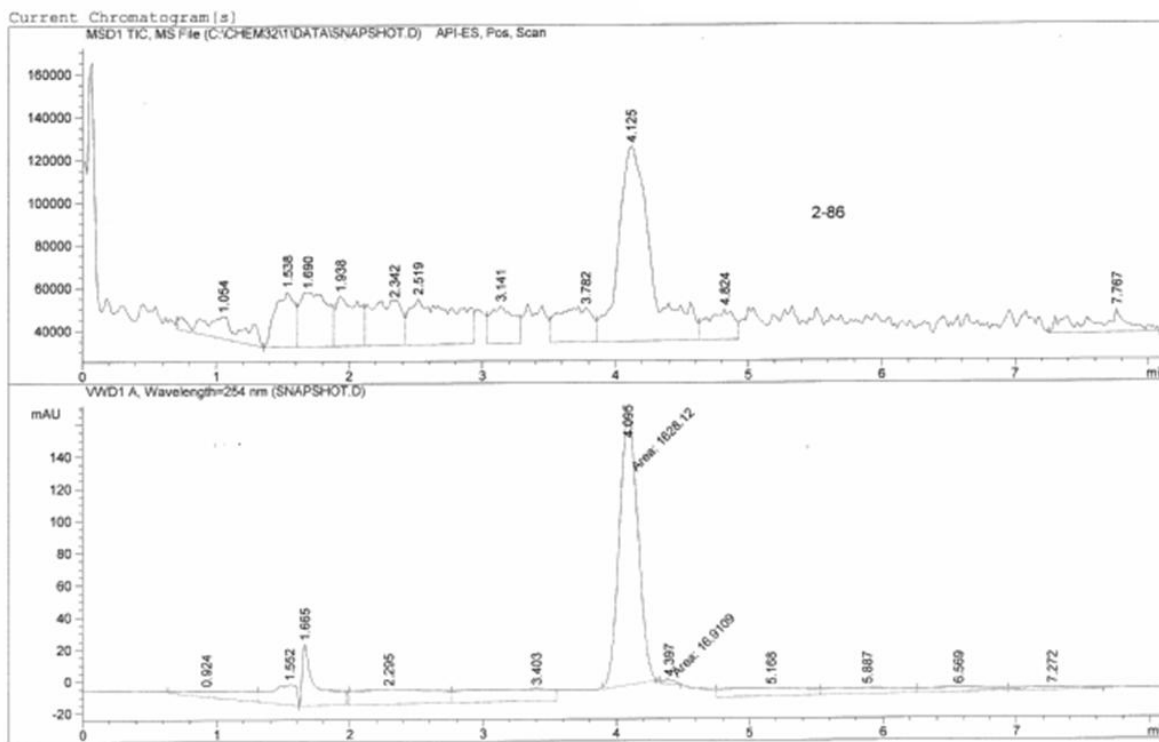
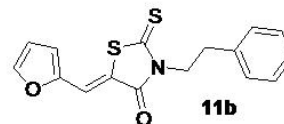


(Z)-5-((furan-2-yl)methylene)-3-phenethyl-2-thioxothiazolidin-4-one (11b).



Print of Window 38: Current Chromatogram(s)

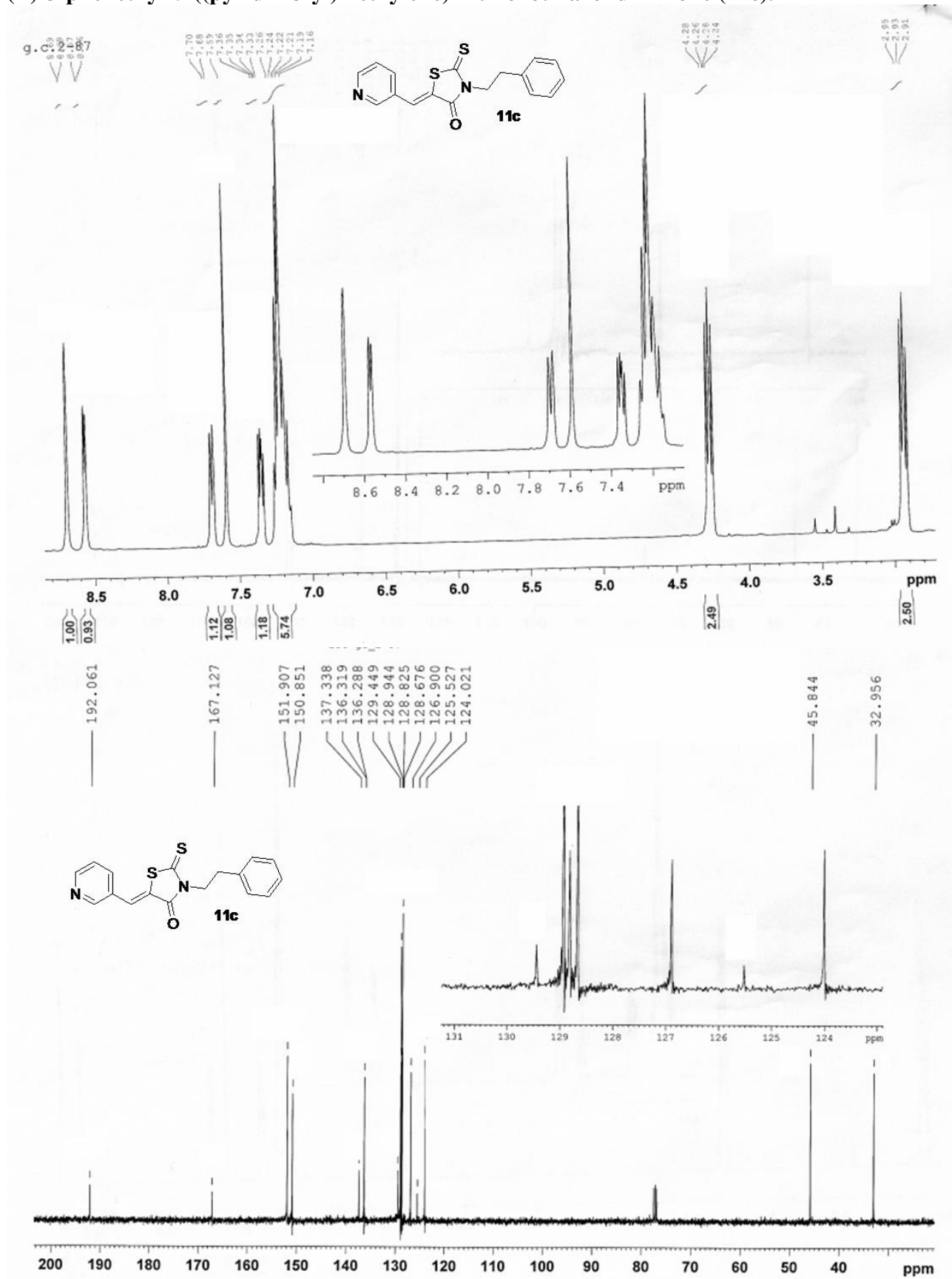
Acq. Operator : GIANNI Location : Vial 1
Injection Date : 05-Nov-09, 12:59:42
Acq. Method : ALICE.M
Analysis Method : C:\CHEM32\1\METHODS\ALICE.M
Last changed : 11/5/2009 11:16:24 AM by GIANNI
(modified after loading)



Instrument 1 11/5/2009 1:10:25 PM GIANNI

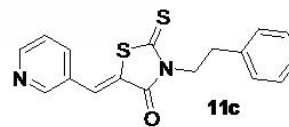
Page

(Z)-3-phenethyl-5-((pyridin-3-yl)methylene)-2-thioxothiazolidin-4-one (11c).

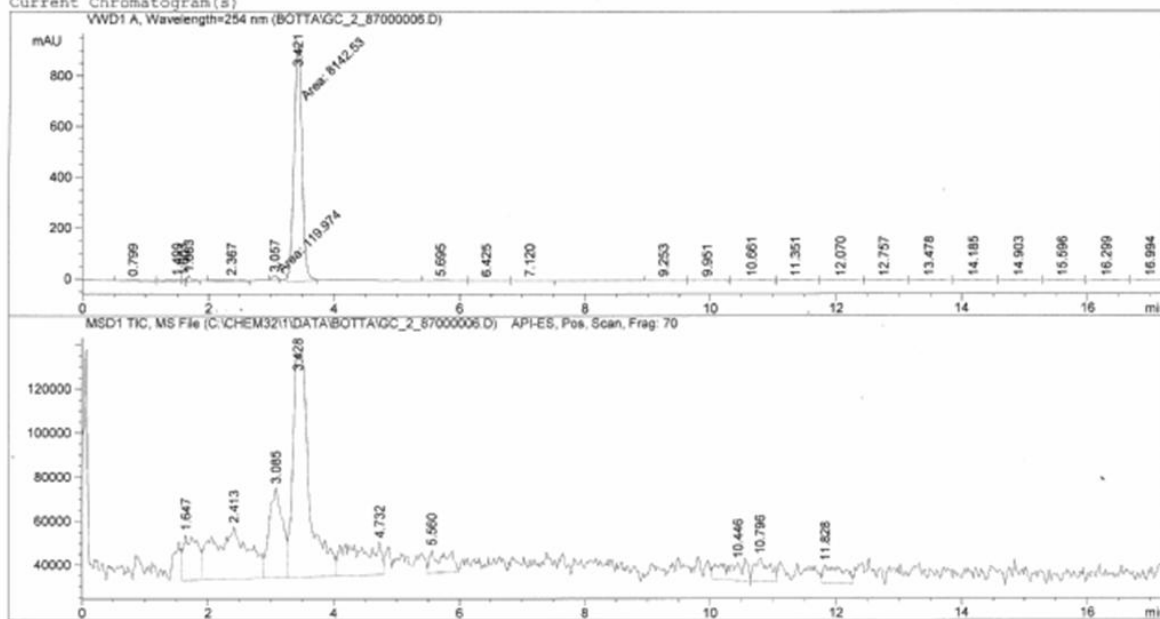


Print of window 38: Current Chromatogram(s)

Acq. Operator : GIANNI
 Acq. Instrument : Instrument 1 Location : -
 Injection Date : 11/5/2009 12:25:21 PM Inj : 1
 Method : C:\CHEM32\1\METHODS\ALICE.M
 Last changed : 11/5/2009 11:16:24 AM by GIANNI
 (modified after loading)
 Sample Info :
 COLUMN: ZORBAX C8 4.6X15
 Conditions: MOBIL PHASE = 85/15 MeOH/H2O
 PRESSURE: 177 BAR
 FLOW: 1 mL/min



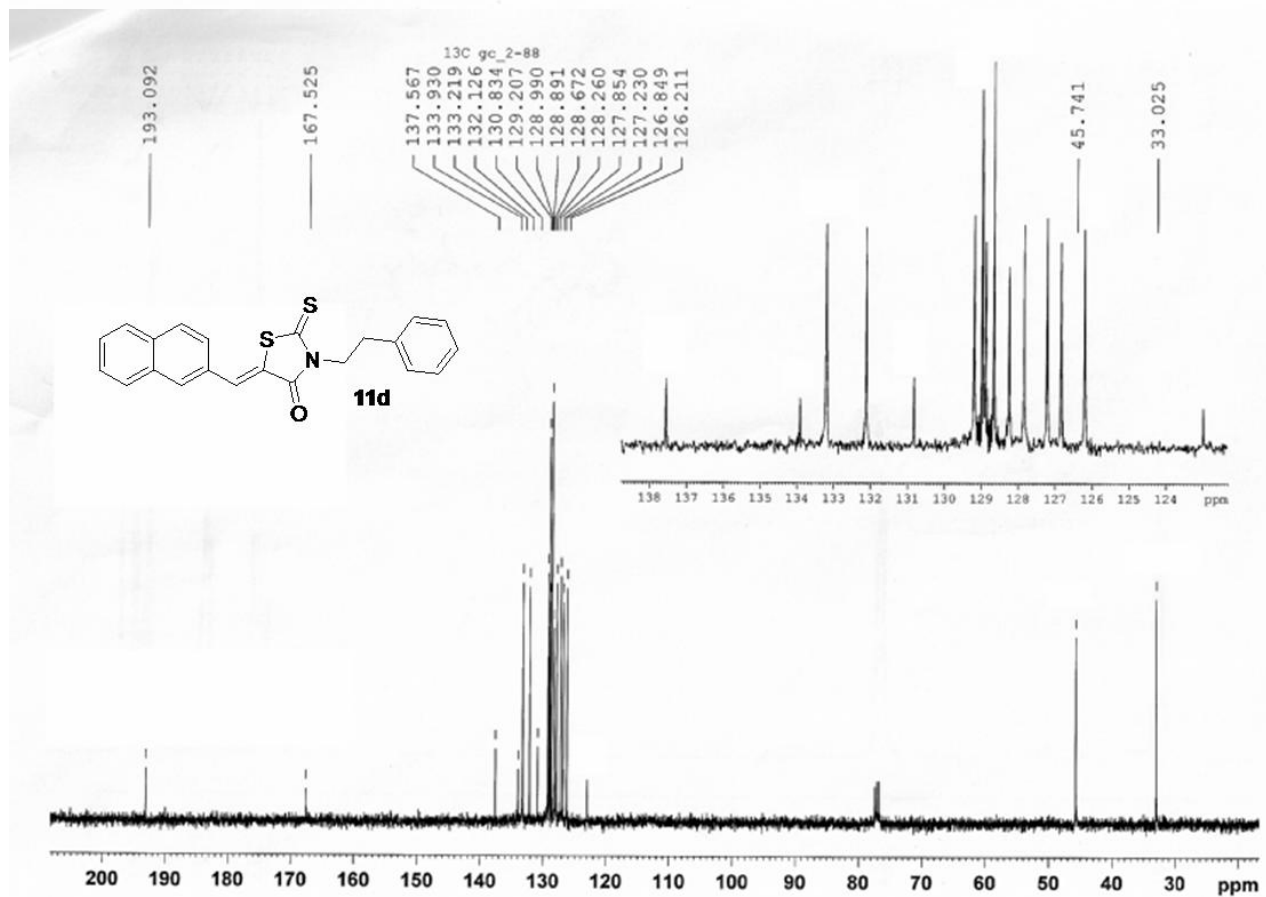
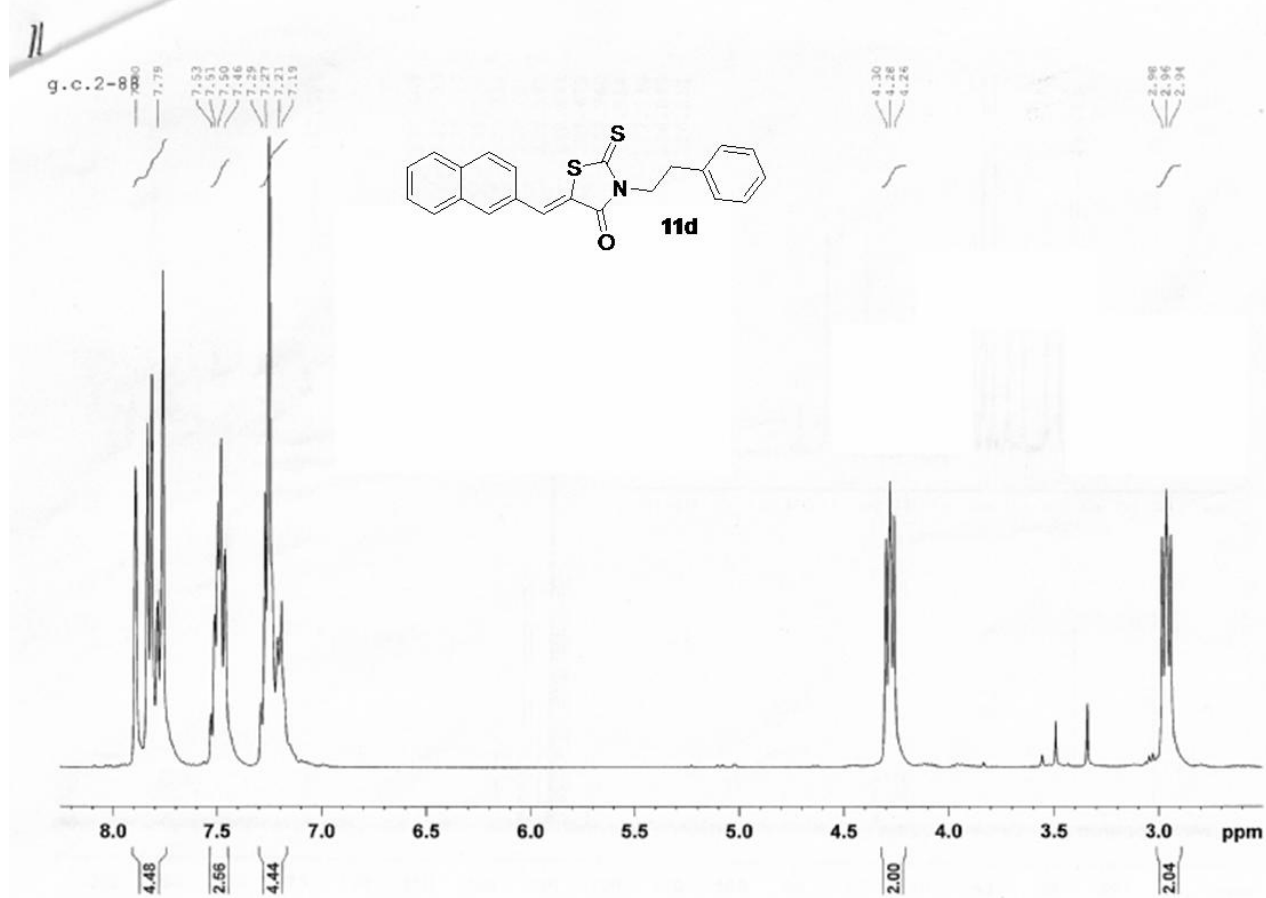
Current Chromatogram(s)



Instrument 1 11/5/2009 12:46:13 PM GIANNI

Page

(Z)-5-((naphthalen-3-yl)methylene)-3-phenethyl-2-thioxothiazolidin-4-one (11d).



Print of Window 38: Current Chromatogram(s)

Acq. Operator : GIANNI

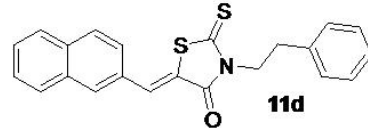
Location : Vial 1

Injection Date : 05-Nov-09, 12:59:42

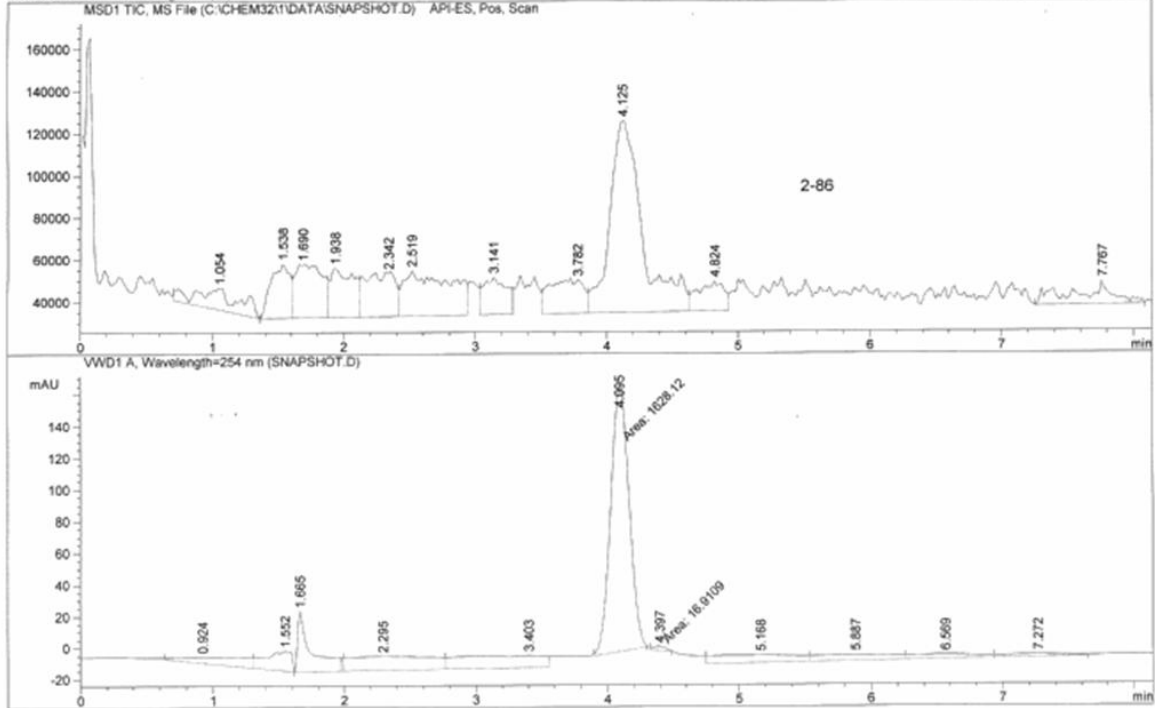
Acq. Method : ALICE.M

Analysis Method : C:\CHEM32\1\METHODS\ALICE.M

Last changed : 11/5/2009 11:16:24 AM by GIANNI
(modified after loading)



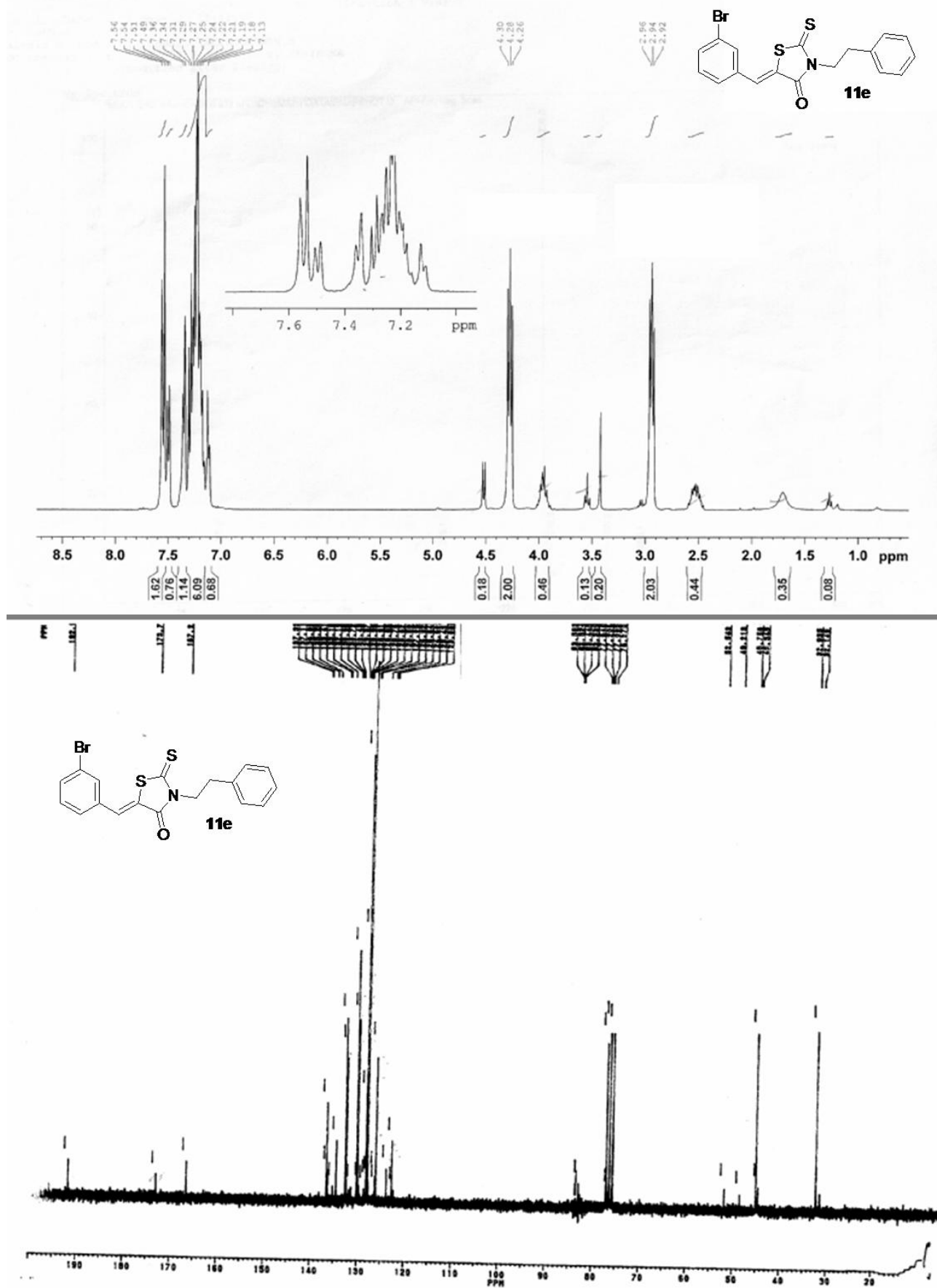
Current Chromatogram(s)



Instrument: 1 11/5/2009 1:10:25 PM GIANNI

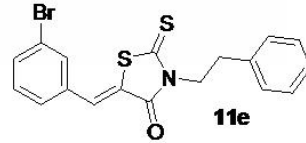
Page 1

(Z)-5-(3-bromobenzylidene)-3-phenethyl-2-thioxothiazolidin-4-one (11e).

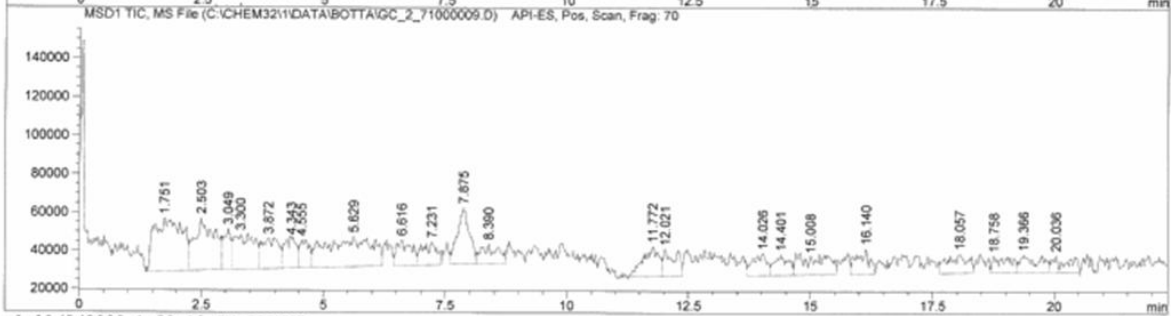
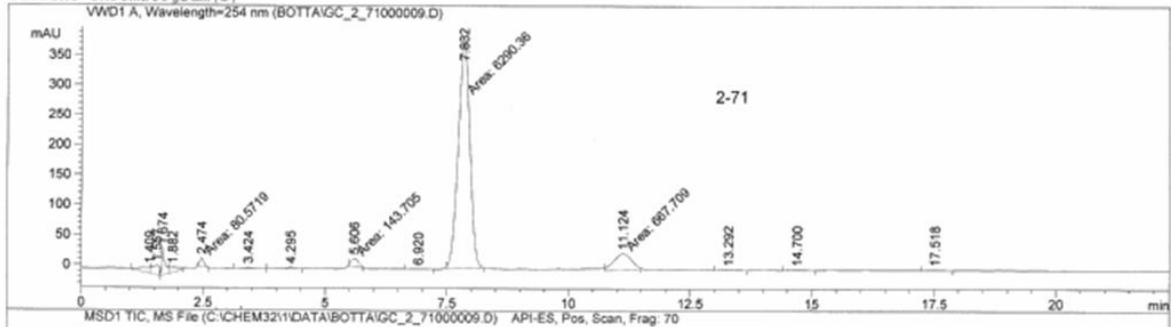


Print of window 38: Current Chromatogram(s)

Acq. Operator : GIANNI
 Acq. Instrument : Instrument 1 Location : -
 Injection Date : 11/5/2009 1:33:09 PM Inj : 1
 Method : C:\CHEM32\1\METHODS\ALICE.M
 Last changed : 11/5/2009 11:16:24 AM by GIANNI
 (modified after loading)
 Sample Info :
 COLUMN: ZORBAX C8 4.6X15
 Conditions: MOBIL PHASE = 85/15 MeOH/H2O
 PRESSURE: 177 BAR
 FLOW: 1 mL/min



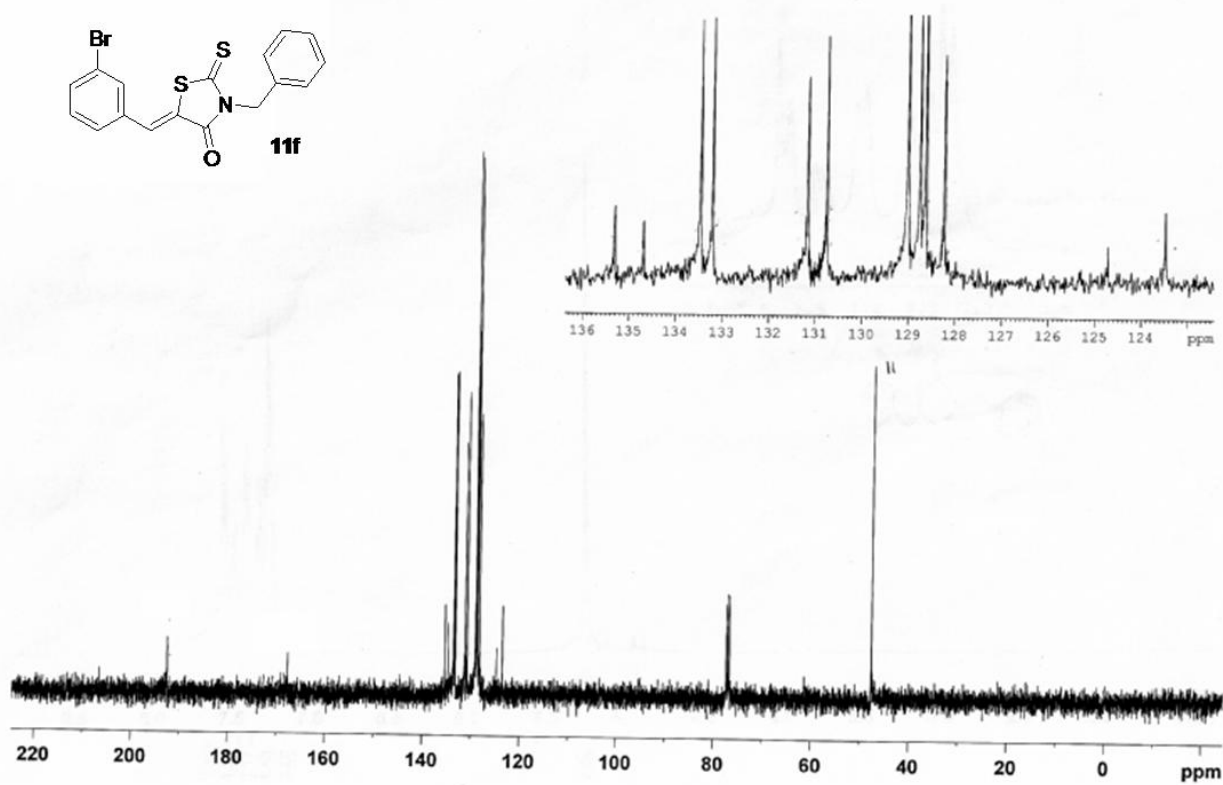
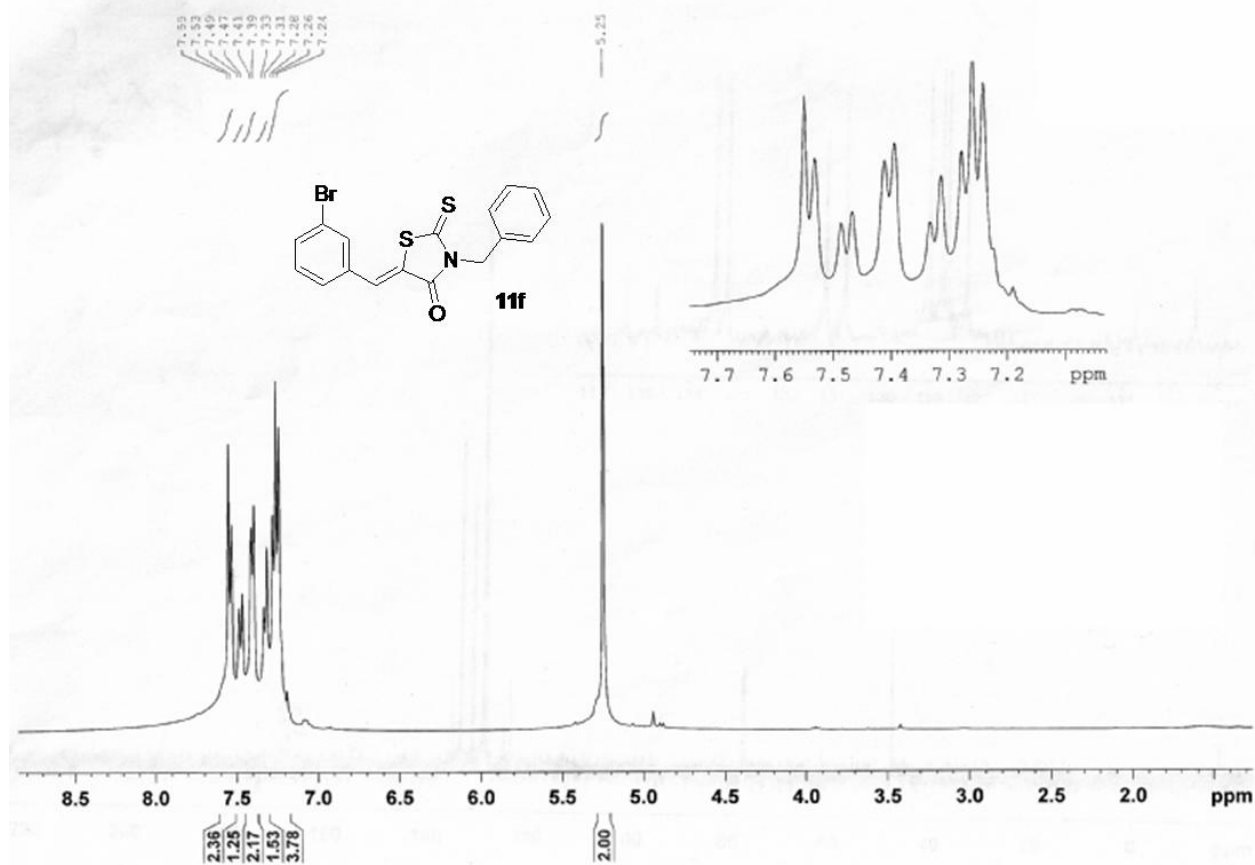
Current Chromatogram(s)



Instrument 1 11/5/2009 1:58:10 PM GIANNI

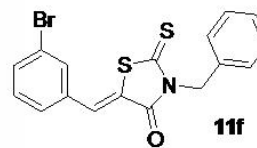
Page

(Z)-5-(3-bromobenzylidene)-3-benzyl-2-thioxothiazolidin-4-one (11f).

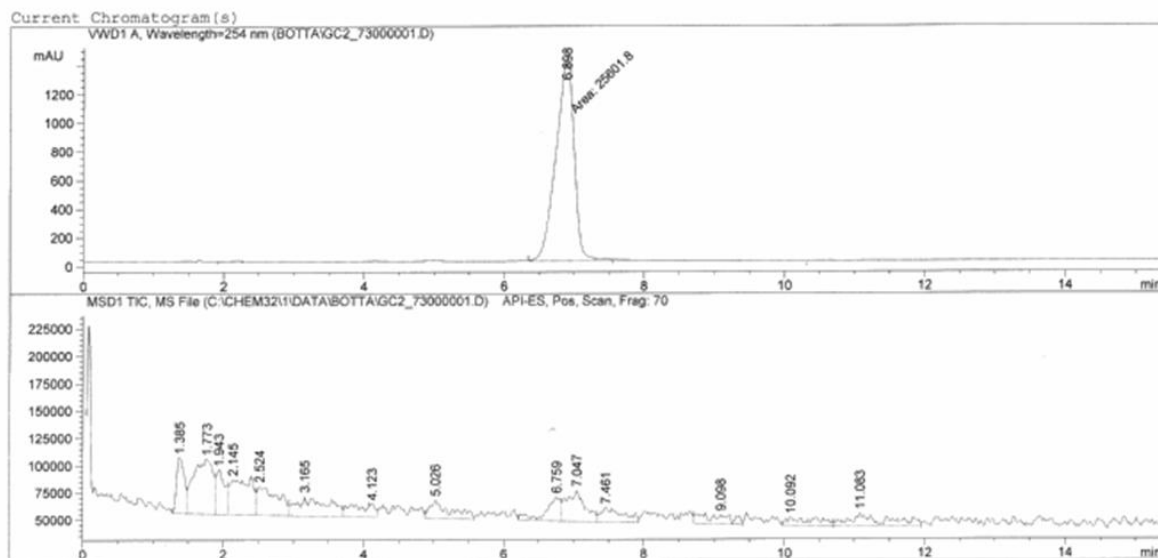


Print of window 38: Current Chromatogram(s)

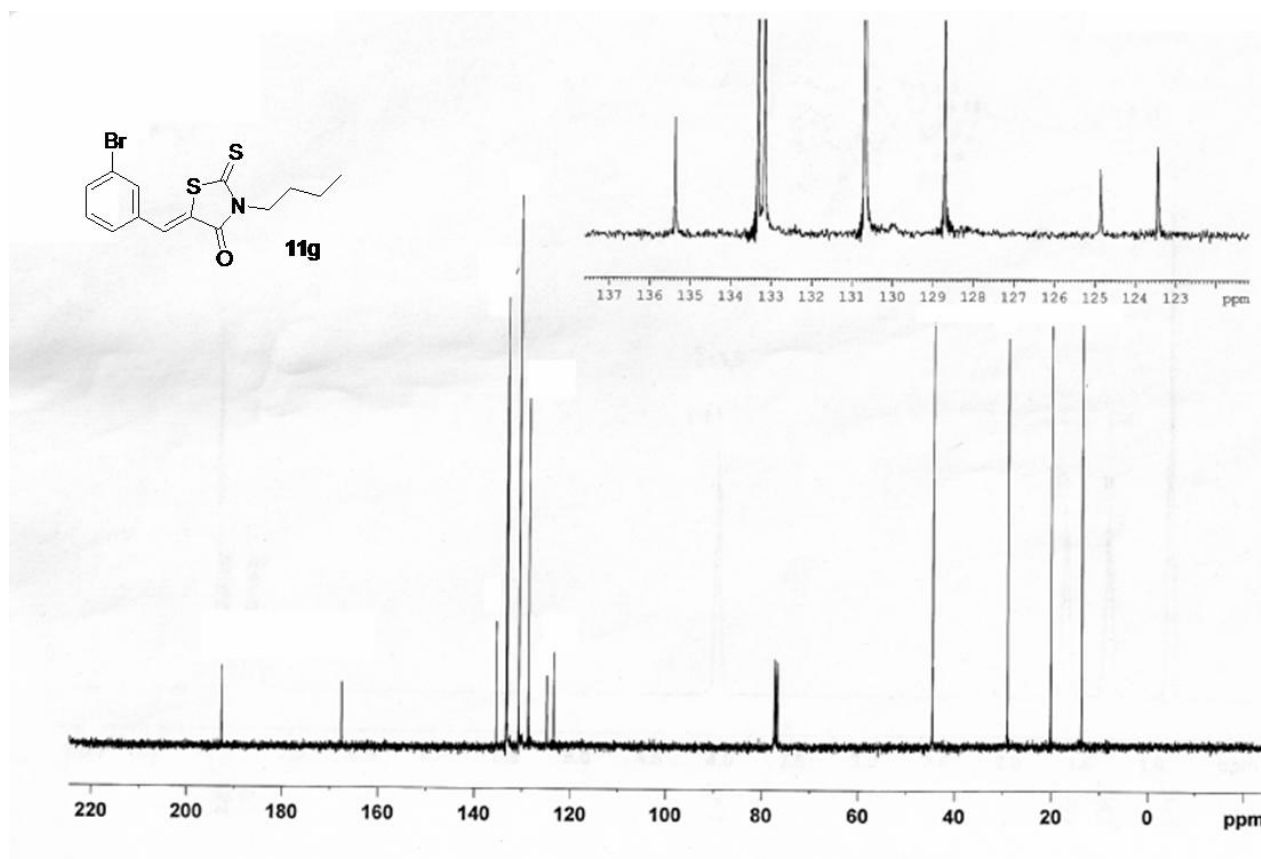
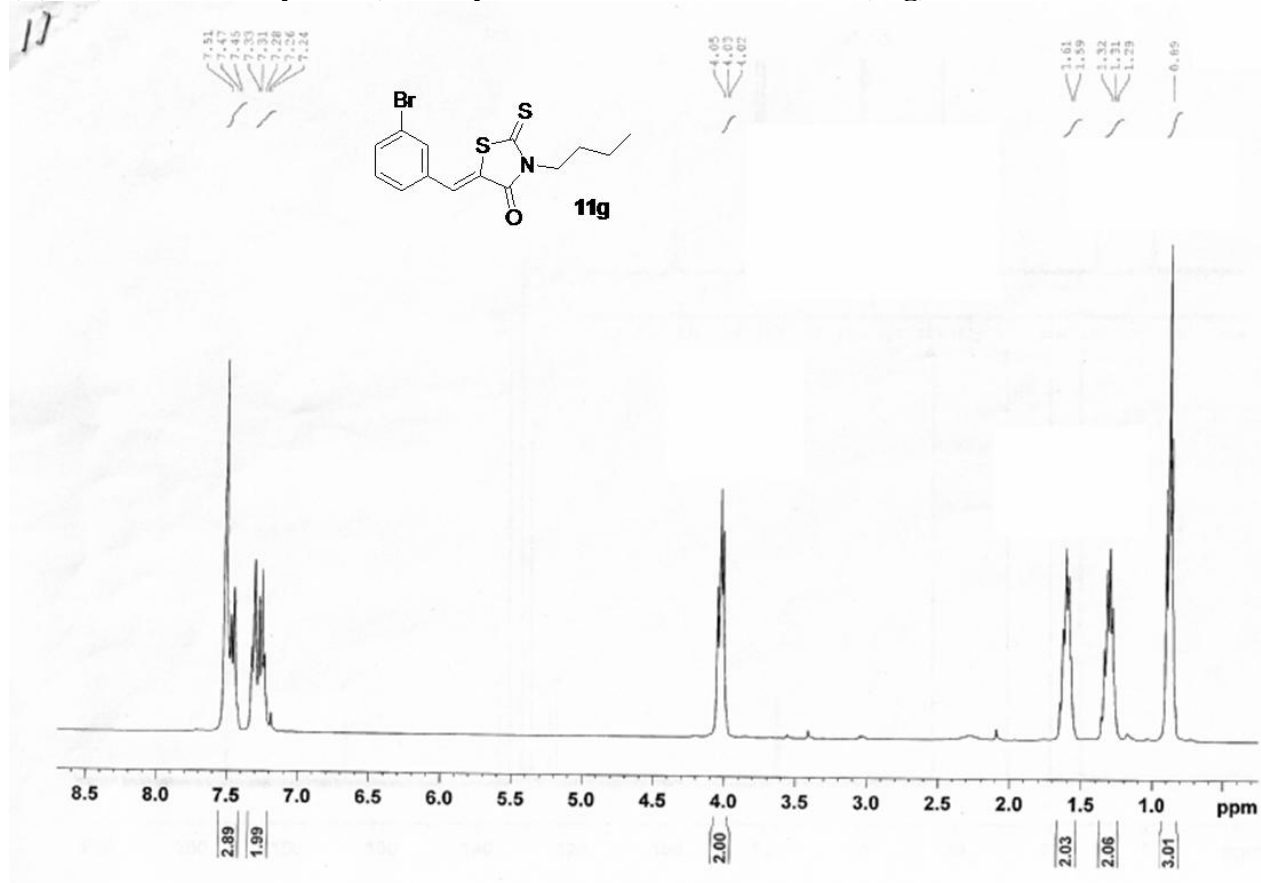
Acq. Operator : GIANNI
Acq. Instrument : Instrument 1 Location : -
Injection Date : 11/9/2009 11:15:58 AM Inj : 1
Method : C:\CHEM32\1\METHODS\ALICE.M
Last changed : 11/9/2009 11:14:28 AM by GIANNI
[modified after loading]
Sample Info : ZORBAX C8 4.6X15 cm
CONDITIONS: 85/15 MeOH/H2O
pressure: 184 bar
flow: 1 mL/min



FLOW: 1 mL/min

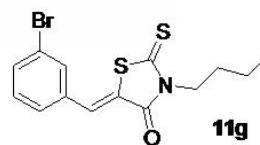


(Z)-5-(3-bromobenzylidene)-3-butyl-2-thioxothiazolidin-4-one (11g).

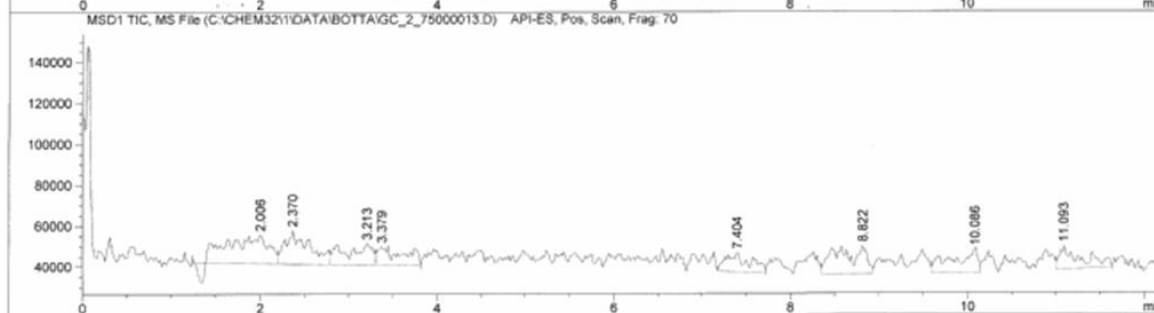
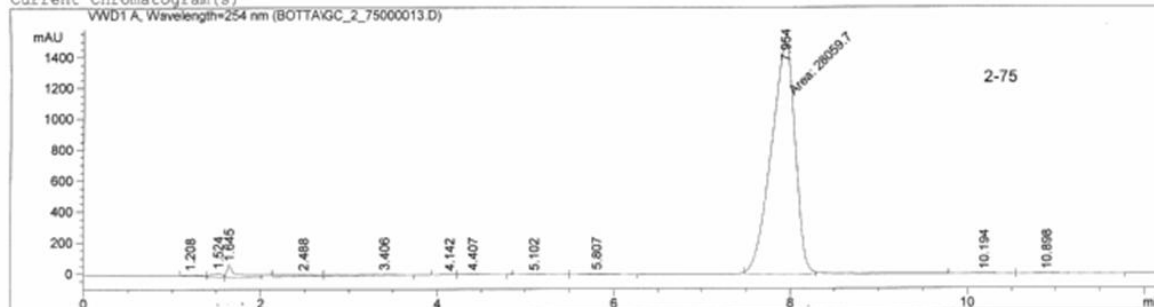


Print of window 38: Current Chromatogram(s)

Acq. Operator : GIANNI
Acq. Instrument : Instrument 1 Location : -
Injection Date : 11/5/2009 2:26:19 PM Inj : 1
Method : C:\CHEM32\1\METHODS\ALICE.M
Last changed : 11/5/2009 11:16:24 AM by GIANNI
(modified after loading)
Sample Info :
COLUMN: ZORBAX C8 4.6X15
Conditions: MOBIL PHASE = 85/15 MeOH/H2O
PRESSURE: 177 BAR
FLOW: 1 mL/min



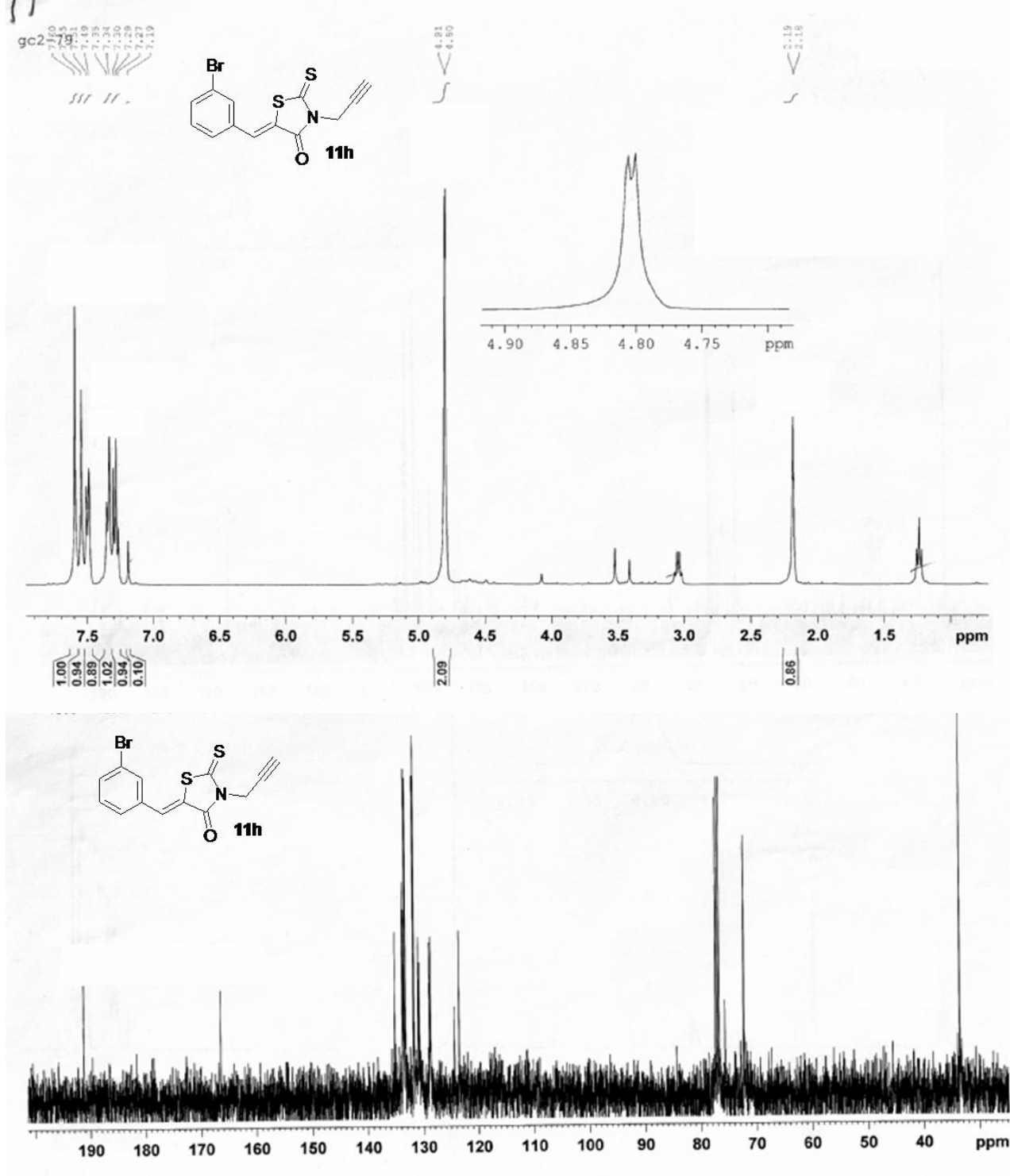
Current Chromatogram(s)



Instrument 1 11/5/2009 2:40:04 PM GIANNI

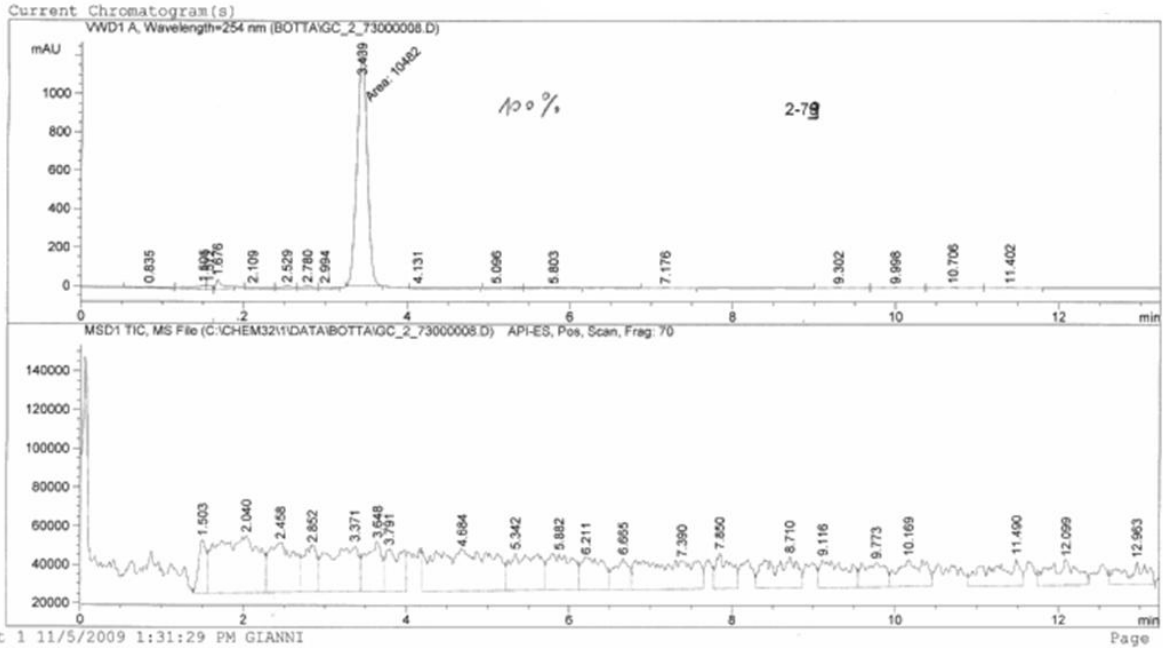
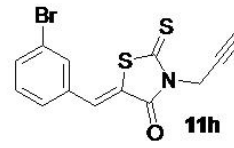
Page

(Z)-5-(3-bromobenzylidene)-3-(prop-2-ynyl)-2-thioxothiazolidin-4-one (11h).



Print of window 38: Current Chromatogram(s)

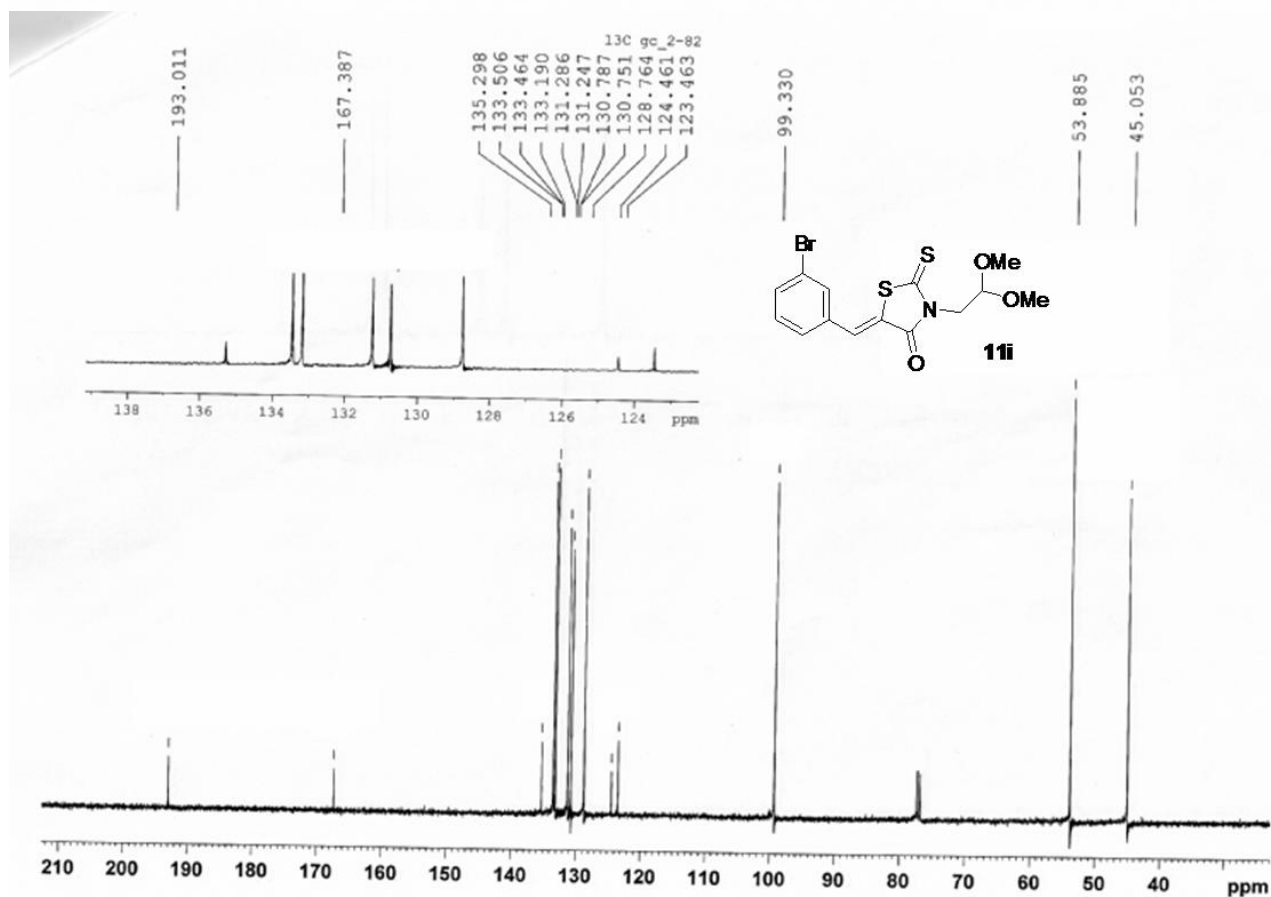
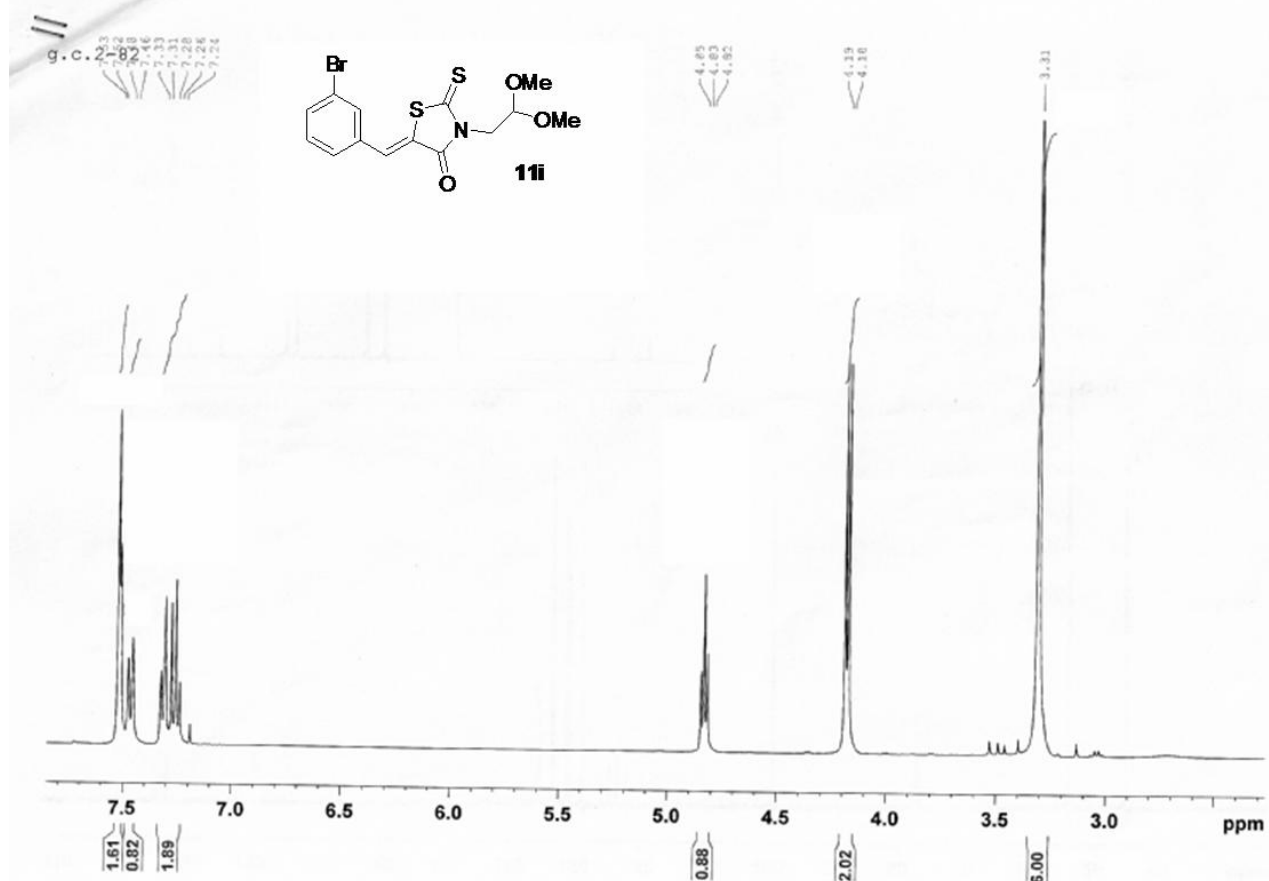
Operator : GIANNI
Acq. Instrument : Instrument 1 Location : -
Injection Date : 11/5/2009 1:13:54 PM Inj : 1
Method : C:\CHEM32\1\METHODS\ALICE.M
Last changed : 11/5/2009 11:16:24 AM by GIANNI
(modified after loading)
Sample Info :
COLUMN: ZORBAX C8 4.6X15
Conditions: MOBIL PHASE = 85/15 MeOH/H2O
PRESSURE: 177 BAR
FLOW: 1 mL/min



Instrument 1 11/5/2009 1:31:29 PM GIANNI

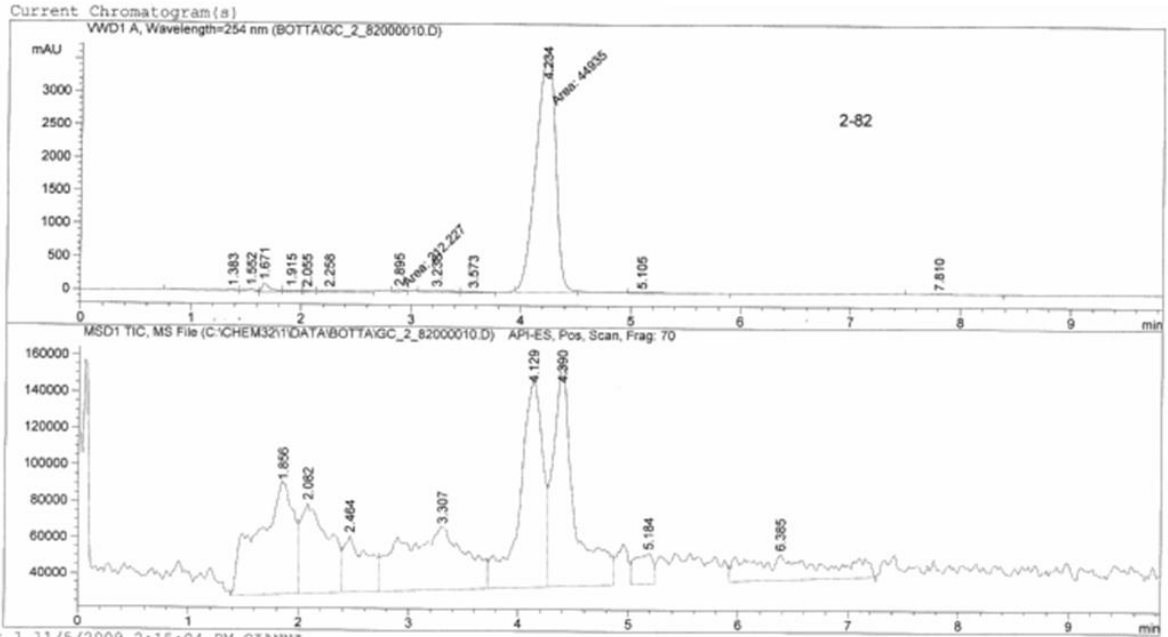
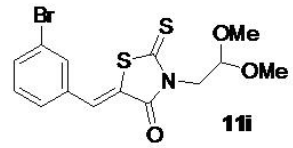
Page

(Z)-5-(3-bromobenzylidene)-3-(2,2-dimethoxyethyl)-2-thioxothiazolidin-4-one (11i).

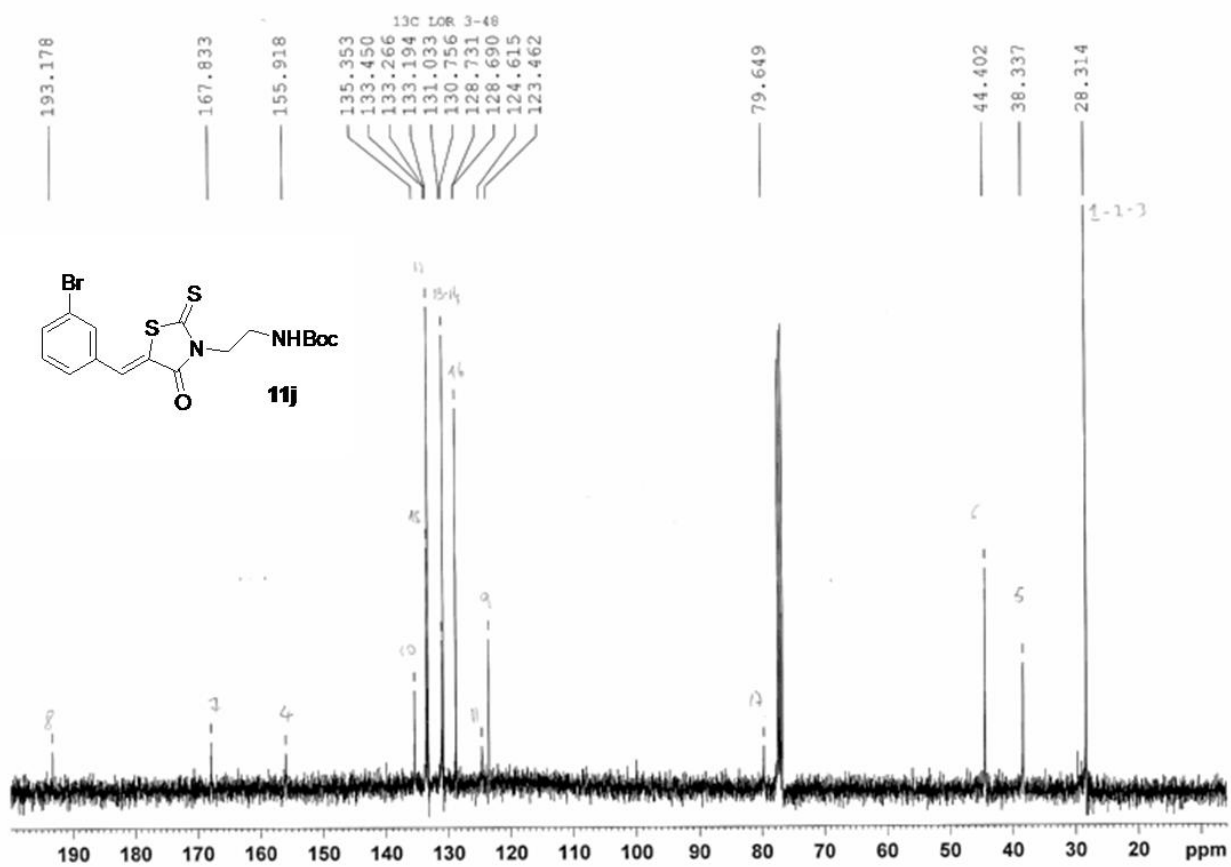
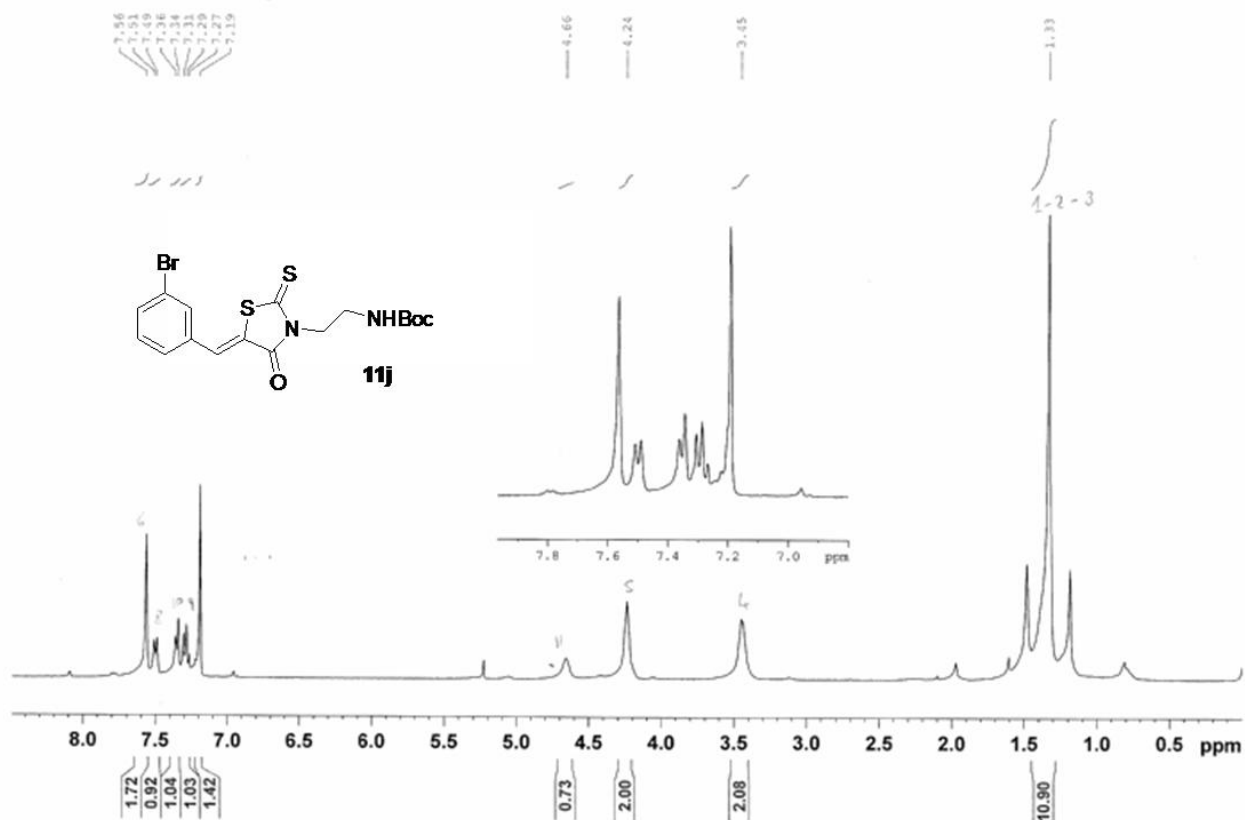


Print of window 38: Current Chromatogram(s)

Acq. Operator : GIANNI
Acq. Instrument : Instrument 1 Location : -
Injection Date : 11/5/2009 2:00:57 PM Inj : 1
Method : C:\CHEM32\1\METHODS\ALICE.M
Last changed : 11/5/2009 11:16:24 AM by GIANNI
(modified after loading)
Sample Info :
COLUMN: ZORBAX CB 4.6X15
Conditions: MOBIL PHASE = 85/15 MeOH/H2O
PRESSURE: 177 BAR
FLOW: 1 mL/min

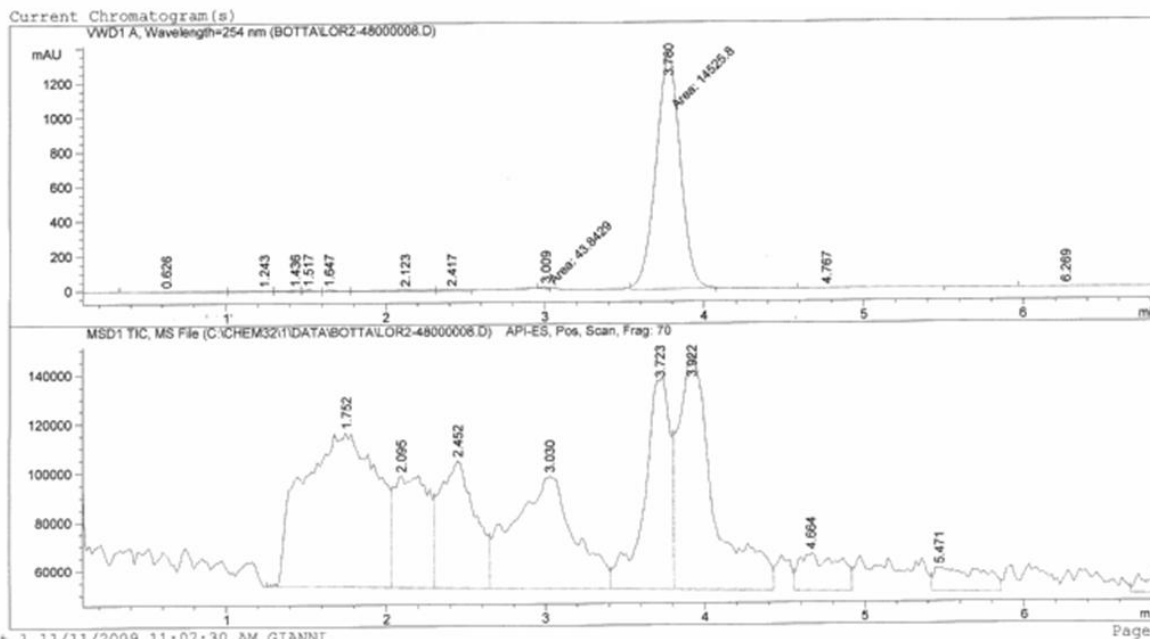
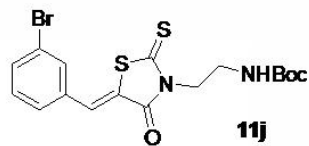


(Z)-5-(3-bromobenzylidene)-3-(2-(tert-butylamino)ethyl)-2-thioxothiazolidin-4-one (11j).



of window 38: Current Chromatogram(s)

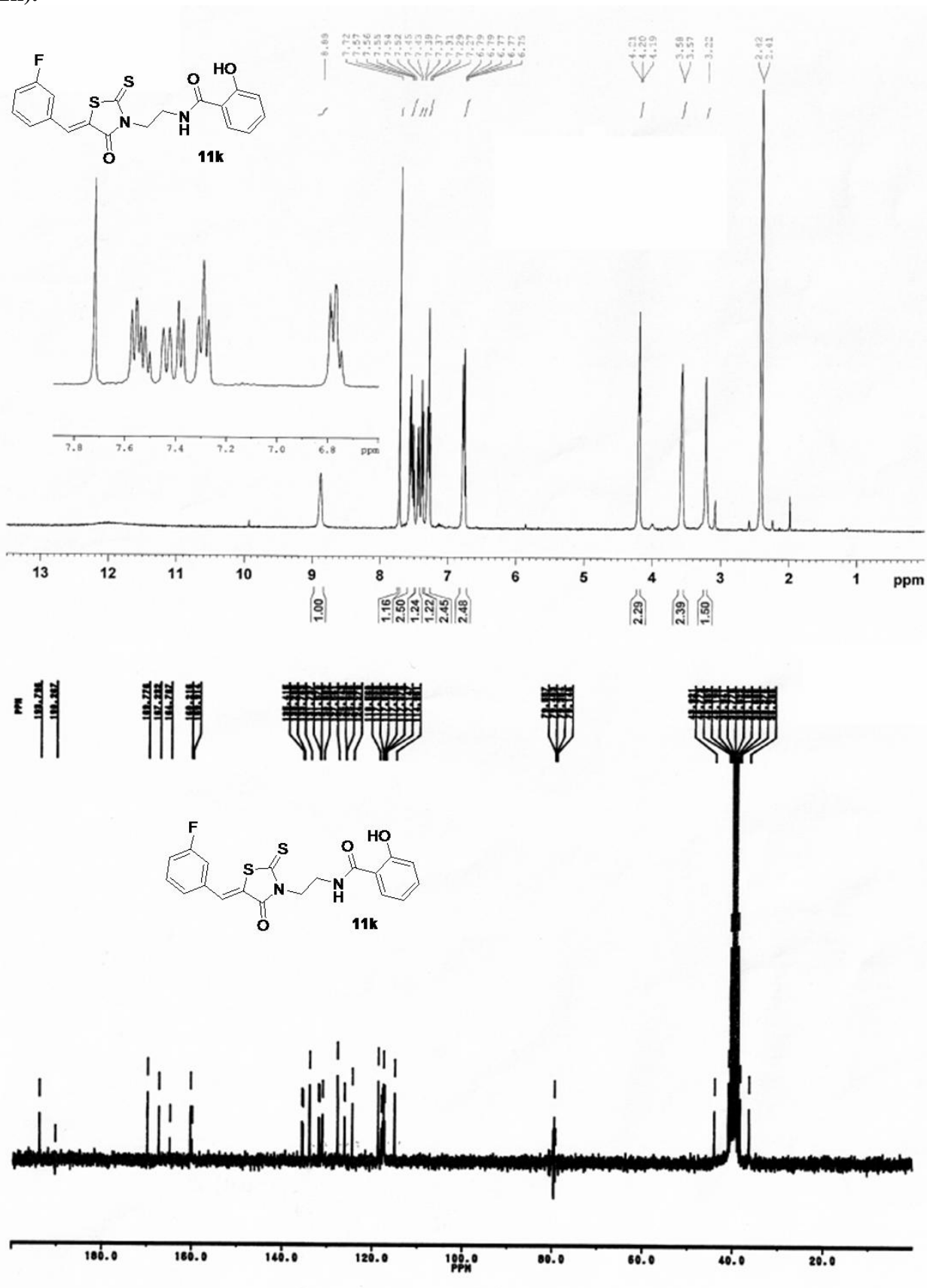
Acq. Operator : GIANNI
Acq. Instrument : Instrument 1 Location : -
Injection Date : 11/11/2009 10:49:41 AM Inj : 1
Method : C:\CHEM32\1\METHODS\ALICE.M
Last changed : 11/11/2009 10:28:25 AM by GIANNI
(modified after loading)
Sample Info :
COLUMN: C8 4.6X15CM
MOB. PHASE 85/15 MeOH/H2O
PRESSURE: 182 BAR
FLOW: 1 mL/min
FRAG 70 pos



Instrument 1 11/11/2009 11:07:30 AM GIANNI

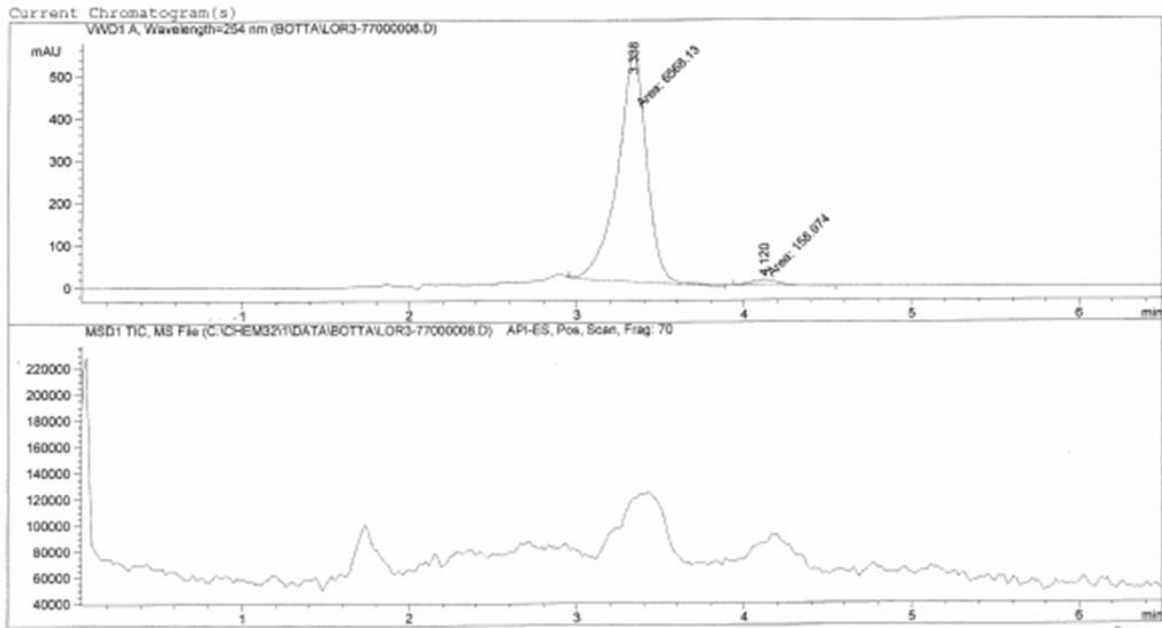
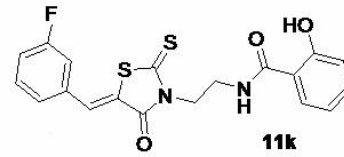
Page

N-(2-((Z)-5-(3-fluorobenzylidene)-4-oxo-2-thioxothiazolidin-3-yl)ethyl)-2-hydroxybenzamide (11k).



Print of window 38: Current Chromatogram(s)

Acq. Operator : VINCE
Acq. Instrument : Instrument 1 Location : -
Injection Date : 11/18/2009 10:50:07 AM Inj : 1
Method : C:\CHEM32\1\METHODS\ALICE.M
Last changed : 11/18/2009 10:24:39 AM by VINCE
(modified after loading)
Sample Info : column: Zorbax CB Eclypse
eluent: MeOH:H2O 85:15
flow: 1 ml/min
scan+ frag70
sample in MeOH + 2 drops DMSO
Starting pressure: 164



Instrument 1 11/18/2009 11:08:49 AM VINCE

Page